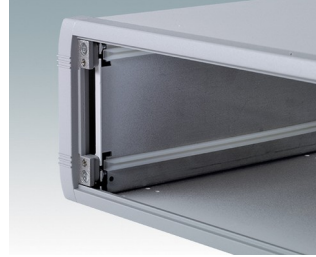
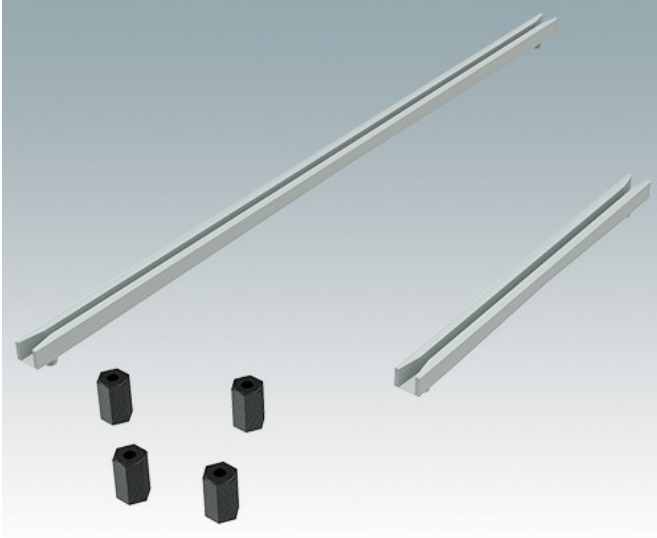
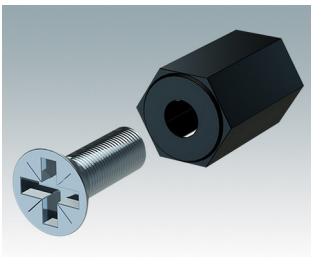


## Universal-Zubehör zur Montage von Leiterkarten in alle Gehäuse

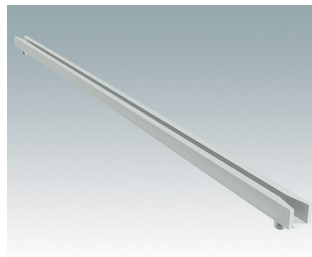
- Leiterplatten-Abstandshalter, M3, Kunststoff, 10 mm hoch
- Leiterkartenführungen zum Einrasten für 1,6 mm dicke Leiterkarten



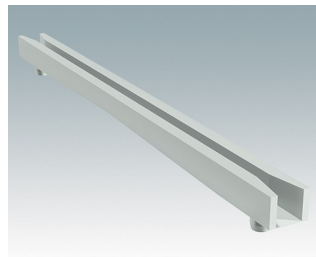
### Versionen



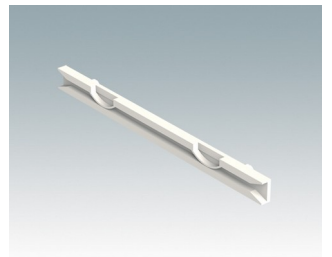
**M5600001**  
Leiterkarten Montage-Set  
PA 6  
Schwarz RAL 9005



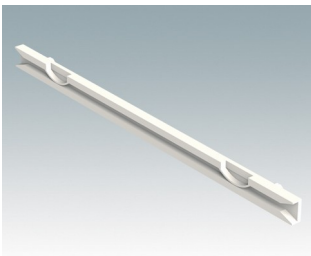
**M5700202**  
Kartenführung, 216mm  
PA 6/6 (UL 94 V-2)  
Weiß



**M5700203**  
Kartenführung, 102mm  
PA 6/6 (UL 94 V-2)  
Weiß

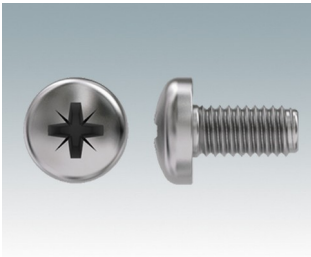


**M6490010**  
Kartenführung, 102mm  
PA 6/6 (UL 94 V-0)  
Blank  
101.6x7.5x3.5mm



**M6490020**  
Kartenführung, 140 mm  
PA 6/6 (UL 94 V-0)  
Blank  
139.7x7.5x3.5mm

## Zubehör



**M5600010**  
PCB-Befestigungsschrauben,  
M3  
Stahlmetall  
Verzinkt  
6mm

Technische Änderungen vorbehalten. © OKW Enclosures Ltd